



SALES & MARKETING BULLETIN

NEC

DL38483101 MARCH 1

SL2100 SP310 Softphone Release

This Bulletin informs you of the release of the SP310 Softphone on the SL2100.

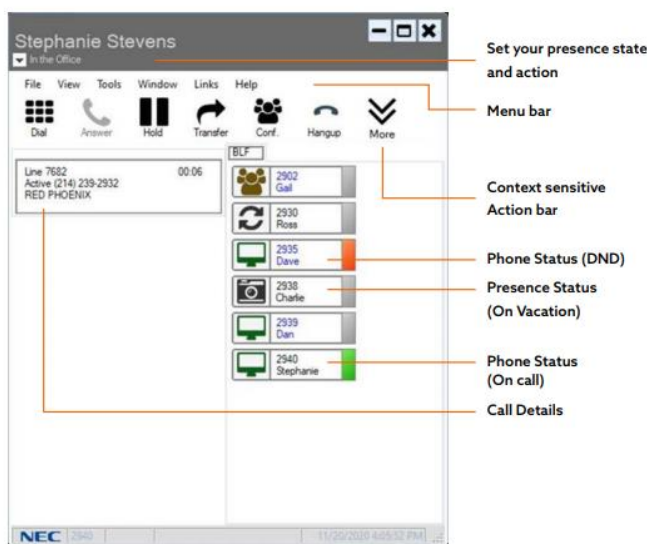
This extends the product support from the SV9100 to the SL2100 platform to give improved IP connectivity to all SMB platforms.

This significantly improves the remote working* options for the SL2100, particularly important at this time and an investment in the growing practice of homeworking.

The SP310 softphone gives a fully NEC featured telephony application on you Windows based PC.

It gives multiple views to suit the preferred look and functionality of the user

STANDARD USER INTERFACE



TOOLBAR USER INTERFACE



*Requires VPN

In conjunction with the above User Interfaces, it is also to use the Phone emulation view to access all features a regular terminal user can access.



Pricing aspects & Items

The SP310 has two codes:

Product code	Items	Description
BE117745	SL2100 SOFTPHONE-01 LIC	Softphone client
BE117749	SL2100 INMAIL INT-01 LIC	Enhanced Voice Mail GUI allowing enhanced voice mail control (standard voicemail access is available in the SP310 softphone itself)

Pricing can be obtained from your NEC representative/Channel Manager or CPQ.

The SP310 softphone also requires an IP licence (EU909388 SL2100 NEC SIP) and voice mail must be configured for any voice mail functionality.

SL2100 Version 3.10.01 and SL2100 PCPro 3.10.02 is required for SP310 Softphone.

Documentation

There is a new section for the SL2100 SP310 Softphone in the SL2100 Product Area on BusinessNet -



This contains a variety of Marketing, Sales and Technical documentation to aid you.

Availability & Order Information

The SL2100 IP SP310 Softphone will be available for order and software download from 28th Feb 2021.